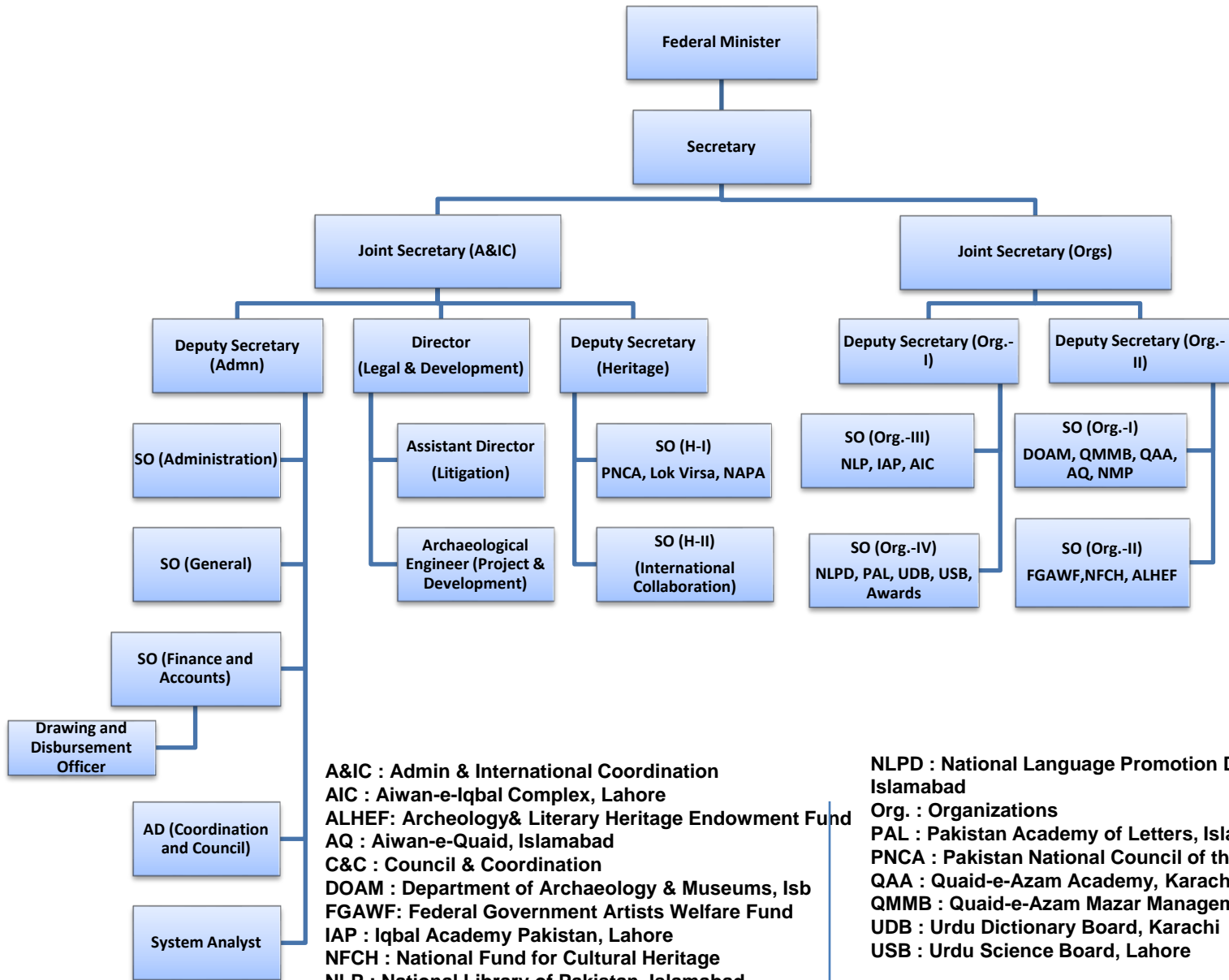


# National Heritage & Culture Division



**A&IC** : Admin & International Coordination  
**AIC** : Aiwan-e-Iqbal Complex, Lahore  
**ALHEF**: Archeology & Literary Heritage Endowment Fund  
**AQ** : Aiwan-e-Quaid, Islamabad  
**C&C** : Council & Coordination  
**DOAM** : Department of Archaeology & Museums, Isb  
**FGAWF**: Federal Government Artists Welfare Fund  
**IAP** : Iqbal Academy Pakistan, Lahore  
**NFCH** : National Fund for Cultural Heritage  
**NLP** : National Library of Pakistan, Islamabad

**NLPD** : National Language Promotion Department, Islamabad  
**Org.** : Organizations  
**PAL** : Pakistan Academy of Letters, Islamabad  
**PNCA** : Pakistan National Council of the Arts, Islamabad  
**QAA** : Quaid-e-Azam Academy, Karachi  
**QMMB** : Quaid-e-Azam Mazar Management Board, Karachi  
**UDB** : Urdu Dictionary Board, Karachi  
**USB** : Urdu Science Board, Lahore